

MANURHIN K'MX 620

Innovative technology

PARAMETERS

Maximum bar diameter – main spindle	Ø 20 mm	Maximum spindle speed – sub-spindle	12 000 rpm
Maximum machining length per stroke	200 mm	Sub-spindle motor power (100% / 30 min)	2,2 / 3,7 kW
Main spindle bore	24,5 mm	Workpiece evacuation through sub-spindle	optional
Main motor spindle power (100% / 25%)	3,7 / 5,5 kW	(for workpieces up to max. Ø 17 mm)	
Maximum spindle speed – main spindle	12 000 rpm	Driven tool power	1 kW
Spindle rotation direction	left and right	Maximum speed of driven tools	8 000 rpm
Stroke of the main spindle headstock	210 mm	Max. Torque OT1, OT5 *	5,5 Nm
Number of tool slides	2	Max. Torque OT2 *	5,8 Nm
Tool slide travel – horizontal X1	60 mm	Max. Torque OT3 *	5,8 Nm
Tool slide travel – vertical Y1	167 mm	Max. Torque OT4	4,8 Nm
Cross slide travel – horizontal X2	240 mm	Air pressure	6 bar
Cross slide travel – vertical Y2	66 mm	Connection coupling	10 mm
Number of tools – main slide	(2 x 5) + (2 x 4)	Tank capacity	150 l
Number of tools – cross slide	8+3	Flow rate	45 l/min
Tool size for external turning	12 x 12 mm	Coolant pump pressure	3 bar
Sub-spindle stroke	210 mm **	Voltage	3 x 400 V – 50 Hz
Rapid traverse for all axes	25 m/min	Power consumption	26 kVA
Maximum bar diameter – sub-spindle	Ø 20 mm	Wire diameter	10 mm ²
Maximum workpiece length for front ejection	140 mm **	CNC control system	FANUC 0i-TF Plus
Sub-spindle bore	Ø 21 mm		
		MACHINE DIMENSIONS	1 980 x 1 230 x 1 813 mm
		MACHINE WEIGHT	2 300 kg

*optional equipment

** subject to change

COLLETS AND GUIDE BUSHES

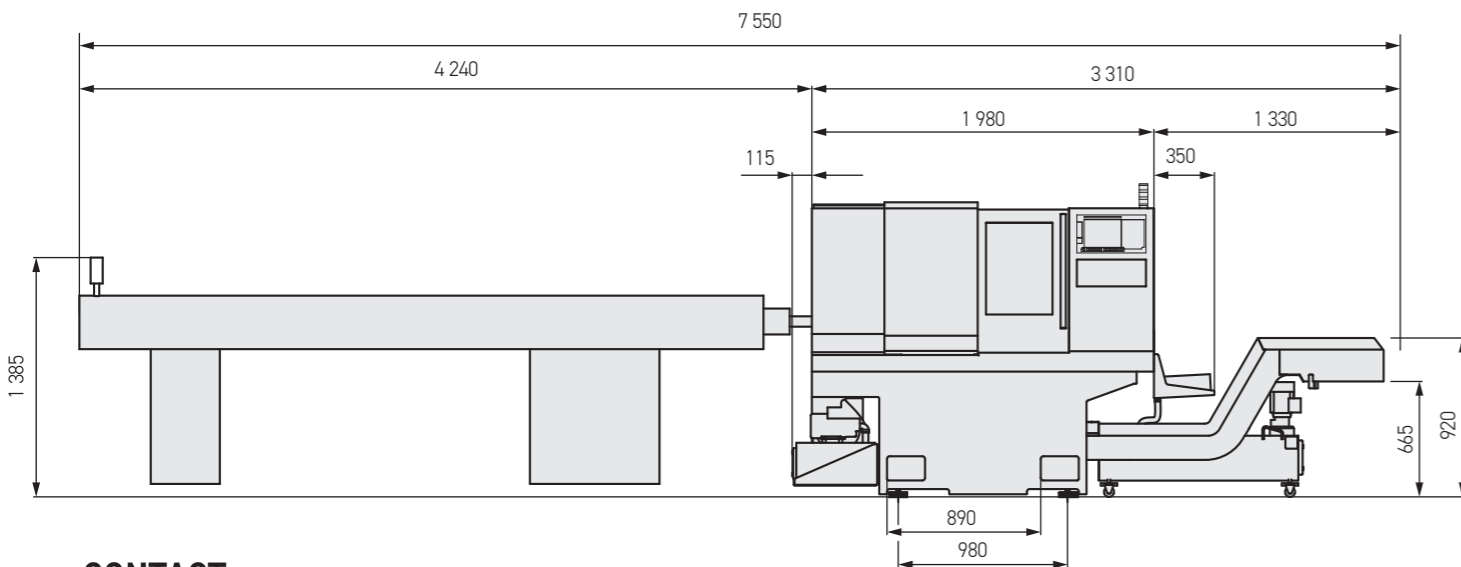


For the K'MX 620, the main spindle is equipped with collets type F28 (DIN 6343 Type 148E) or F25 (DIN 6343 Type 145E). The sub-spindle uses collets type F25 (DIN 6343 Type 145E). We recommend ultra-precision steel collets from reputable specialized manufacturers, available in knurled, smooth, or extended nose (LN) versions.



For the K'MX 620, we use guide bushes type i357 (Schlenker). We recommend guide bushes with carbide inserts from reputable specialized manufacturers.

MACHINE DIMENSIONS



CONTACT

TAJMAC-ZPS, a.s.
 třída 3. května 1180
 763 02 Zlín, Malenovice
 Czech Republic

Telefon: +420 577 532 072
E-mail: info@tajmac-zps.cz
Web: www.tajmac-zps.cz

3/2026

Illustrations and technical data are subject to change without notice.



MANURHIN K'MX 620

Innovative technology



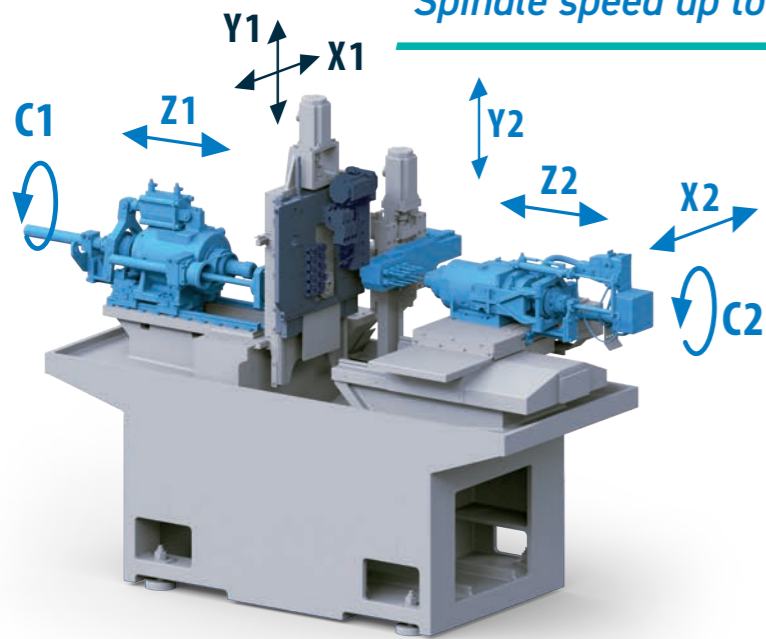
Easy access to all tool positions!

MANURHIN K'MX 620 is supplied as a fully equipped machine in its standard configuration and is immediately ready for machining. The sub-spindle and driven tools are included in the standard package, as well as the bar feeder. Its lightweight kinematics and the latest generation CNC ensure easy and fast programming while reducing setup times.

With two motor spindles, driven tools for both spindles, C-axes, and the ability to machine simultaneously on both spindles, the machine is capable of highly productive machining of complex parts from bar stock up to 20 mm in diameter.

With this machine, MANURHIN K'MX offers its customers an economical, reliable, and user-friendly solution with an outstanding price-to-performance ratio.

KINEMATICS



Spindle speed up to 12,000 rpm!

8,000 rpm on driven unit

Linear axis acceleration:

X1: 8,6 m/s ²	X2: 10,4 m/s ²
Z1: 8,6 m/s ²	Z2: 8,6 m/s ²
Y1: 10,4 m/s ²	Y2: 13,0 m/s ²

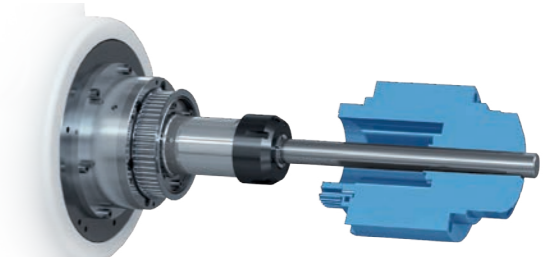
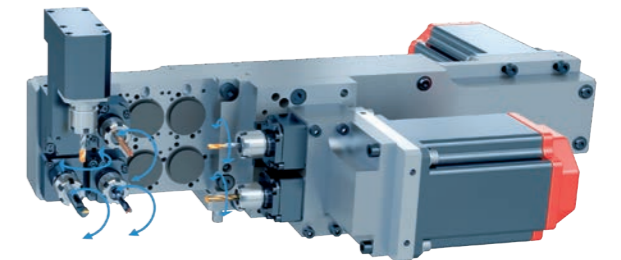
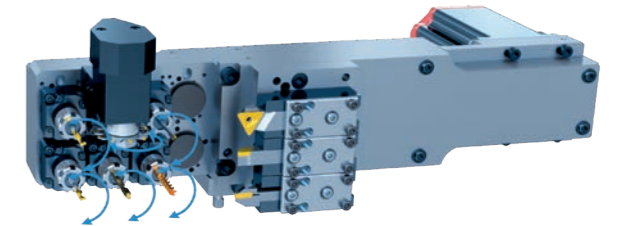
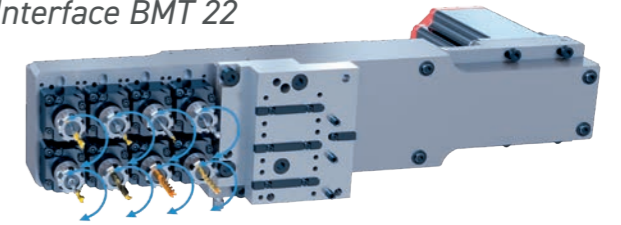
Main spindle bore: 24.5 mm

5,8 Nm on driven tools!

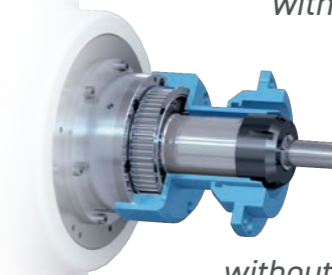
Optional Driven - Tool Solutions

Up to 8 driven or up to 8 fixed positions.

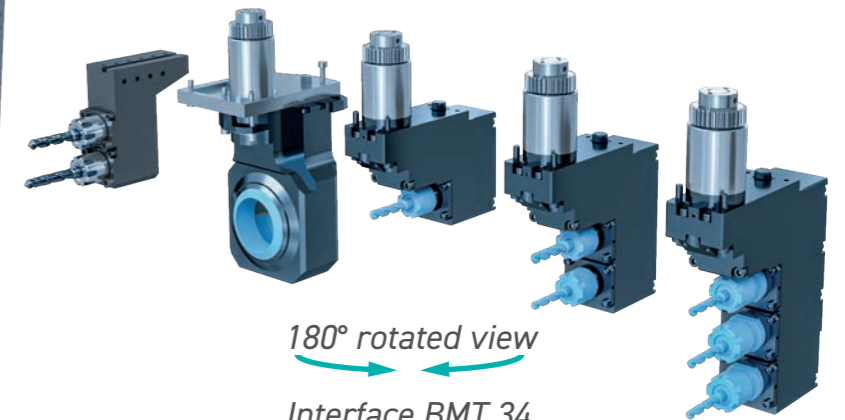
Interface BMT 22



with a driven guide bushing



without a driven guide bushing



180° rotated view

Interface BMT 34

