

MANURHIN K'MX 520

Innovative technology

PARAMETERS

Maximum bar diameter – main spindle	Ø 20 mm	Sub-spindle motor power (100% / 30 min)	2,2 / 3,7 kW
Maximum machining length per stroke	200 mm	Workpiece evacuation through sub-spindle (for workpieces up to max. Ø 17 mm)	optional
Main spindle bore	24,5 mm	Driven tool power	1 kW
Main motor spindle power (100% / 25%)	3,7 / 5,5 kW	Maximum speed of driven tools	8 000 rpm
Maximum spindle speed – main spindle	12 000 rpm	Max. Torque OT1, OT5 *	5,5 Nm
Spindle rotation direction	left and right	Max. Torque OT2 *	5,8 Nm
Stroke of the main spindle headstock	210 mm	Max. Torque OT4	4,8 Nm
Number of tool slides	2	Air pressure	6 bar
Tool slide travel – horizontal X1	60 mm	Connection coupling	10 mm
Tool slide travel – vertical Y1	167 mm	Tank capacity	150 l
Cross slide travel – horizontal X2	240 mm	Flow rate	45 l/min
Number of tools – main slide	(2 x 5) + (2 x 4)	Coolant pump pressure	3 bar
Number of tools – cross slide	4+1	Voltage	3 x 400 V – 50 Hz
Tool size for external turning	12 x 12 mm	Power consumption	26 kVA
Sub-spindle stroke	210 mm **	Wire diameter	10 mm ²
Rapid traverse for all axes	25 m/min	CNC control system	FANUC Oi-TF Plus
Maximum bar diameter – sub-spindle	Ø 20 mm		
Maximum workpiece length for front ejection	140 mm **		
Sub-spindle bore	Ø 21 mm		
Maximum spindle speed – sub-spindle	12 000 rpm		
		MACHINE DIMENSIONS	1 980 x 1 230 x 1 813 mm
		MACHINE WEIGHT	2 300 kg

* optional equipment

** subject to change

COLLETS AND GUIDE BUSHES

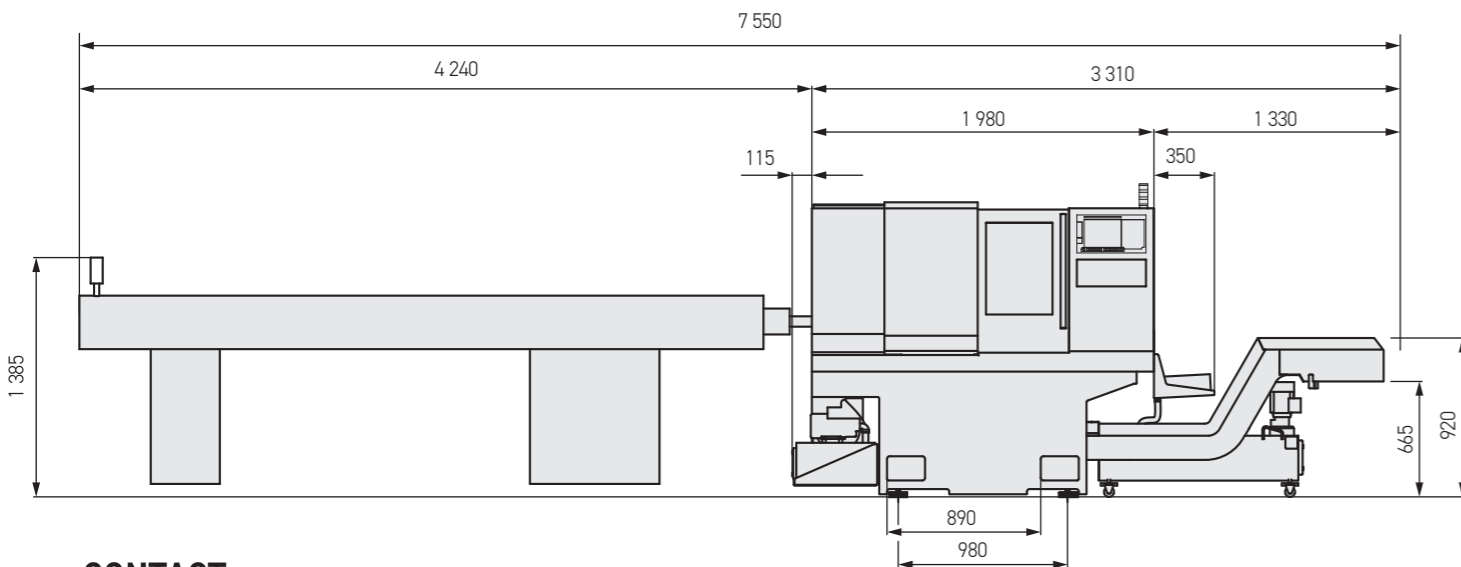


For the K'MX 520, the main spindle is equipped with collets type F28 (DIN 6343 Type 148E) or F25 (DIN 6343 Type 145E). The sub-spindle uses collets type F25 (DIN 6343 Type 145E). We recommend ultra-precision steel collets from reputable specialized manufacturers, available in knurled, smooth, or extended nose (LN) versions.



For the K'MX 520, we use guide bushes type i357 (Schlenker). We recommend guide bushes with carbide inserts from reputable specialized manufacturers.

MACHINE DIMENSIONS



CONTACT

TAJMAC-ZPS, a.s.
třída 3. května 1180
763 02 Zlín, Malenovice
Czech Republic

Telefon: +420 577 532 072
E-mail: info@tajmac-zps.cz
Web: www.tajmac-zps.cz

3/2026



MANURHIN K'MX 520

Innovative technology

MANURHIN K'MX 520 is supplied as a fully equipped machine in its standard configuration and is immediately ready for machining. The sub-spindle and driven tools are included in the standard package, as well as the bar feeder. Its lightweight kinematics and the latest generation CNC ensure easy and fast programming while reducing setup times.

With two motor spindles, driven tools for both spindles, C-axes, and the ability to machine simultaneously on both spindles, the machine is capable of highly productive machining of complex parts from bar stock up to 20 mm in diameter.

With this machine, MANURHIN K'MX offers its customers an economical, reliable, and user-friendly solution with an outstanding price-to-performance ratio.

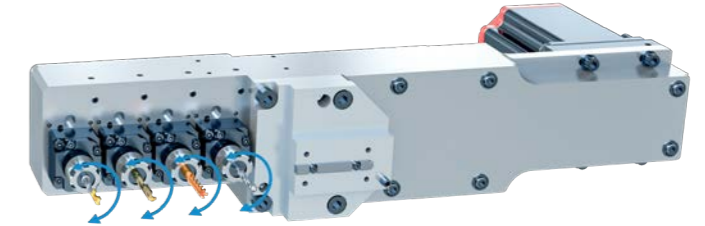


Easy access to all tool positions!

Optional Driven - Tool Solutions

Up to 8 driven or up to 8 fixed positions.

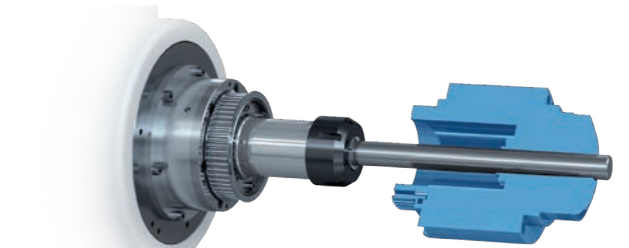
Interface BMT 22



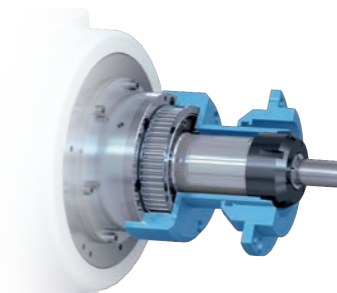
Main spindle bore: 24.5 mm



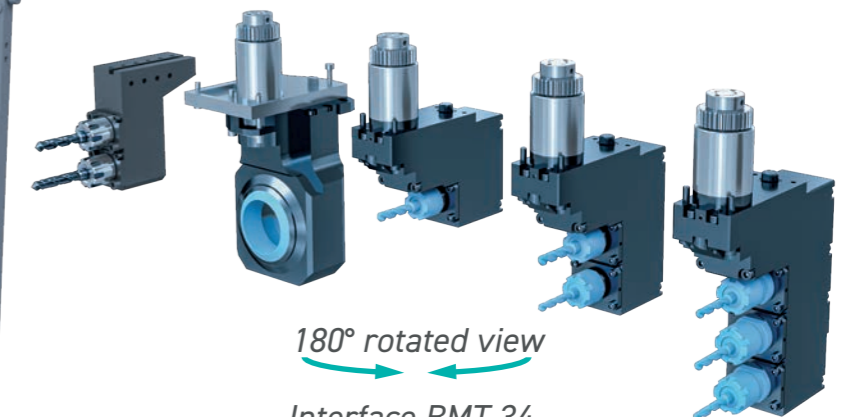
5,8 Nm on driven tools!



with driven guide bush



no guide bush version

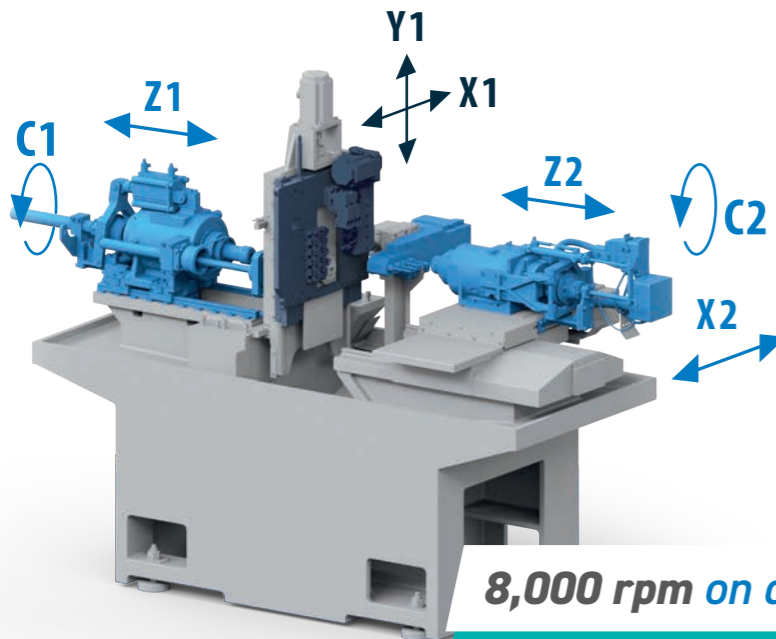


180° rotated view

Interface BMT 34

KINEMATICS

Spindle speed up to 12,000 rpm!



8,000 rpm on driven unit

Linear axis acceleration:

X1: 8,6 m/s² X2: 10,4 m/s²
Z1: 8,6 m/s² Z2: 8,6 m/s²
Y1: 10,4 m/s²

