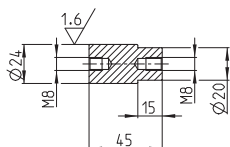
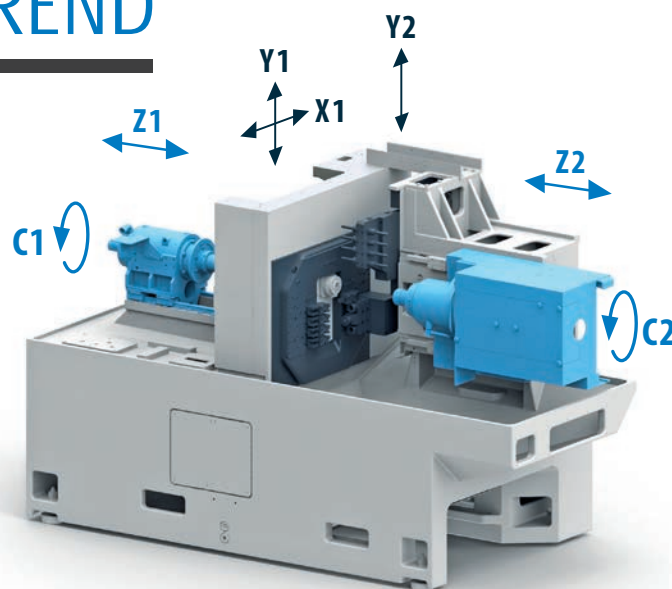


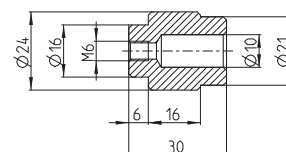
# MANURHIN K'MX 532TREND

Innovative technology



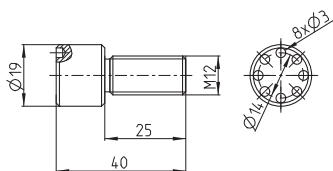
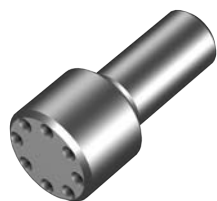
MANURHIN K'MX 532TREND

Hliník EN AW 6061	Mosaz CuZn39Pb3	Automatová ocel 1.0737	Nerezová ocel 1.4301
25 s	28 s	32 s	47 s



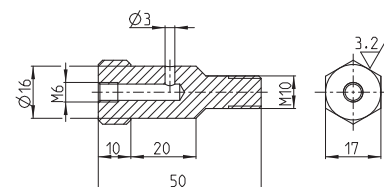
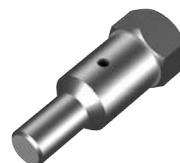
MANURHIN K'MX 532TREND

Hliník EN AW 6061	Mosaz CuZn39Pb3	Automatová ocel 1.0737	Nerezová ocel 1.4301
22 s	24 s	29 s	45 s



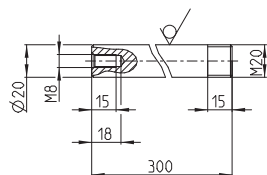
MANURHIN K'MX 532TREND

Hliník EN AW 6061	Mosaz CuZn39Pb3	Automatová ocel 1.0737	Nerezová ocel 1.4301
27 s	30 s	35 s	47 s



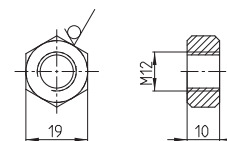
MANURHIN K'MX 532TREND

Hliník EN AW 6061	Mosaz CuZn39Pb3	Automatová ocel 1.0737	Nerezová ocel 1.4301
55 s	57 s	66 s	106 s



MANURHIN K'MX 532TREND

Hliník EN AW 6061	Mosaz CuZn39Pb3	Automatová ocel 1.0737	Nerezová ocel 1.4301
28 s	31 s	34 s	43 s



MANURHIN K'MX 532TREND

Hliník EN AW 6061	Mosaz CuZn39Pb3	Automatová ocel 1.0737	Nerezová ocel 1.4301
22 s	24 s	27 s	37 s

Čas obrábění dílce je kalkulován při použití standardních nástrojů, bez speciálních technologií, vysokotlakého chlazení skrz nástroje a s ohledem na optimální životnost používaných nástrojů.