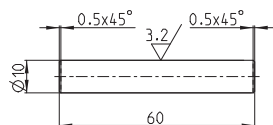
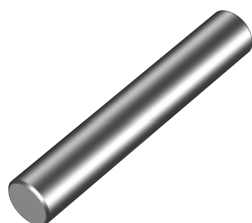
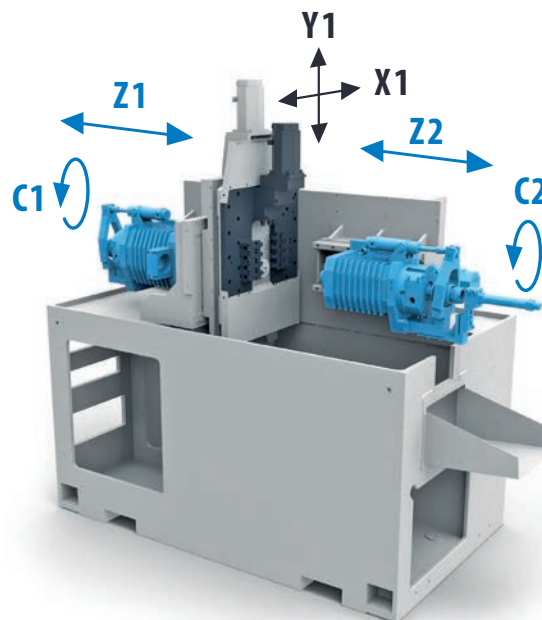


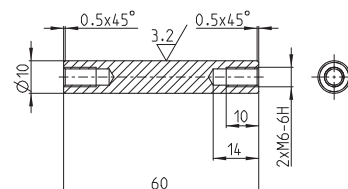
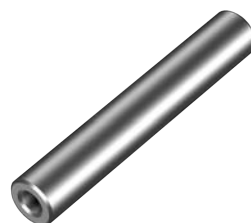
# MANURHIN K'MX 413

Innovative technology



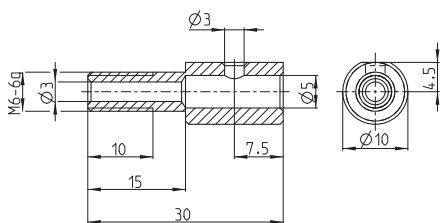
MANURHIN K'MX 413

Hliník EN AW 6061	Mosaz CuZn39Pb3	Automatová ocel 1.0737	Nerezová ocel 1.4301
14 s	15 s	16 s	22 s



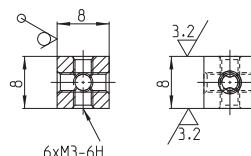
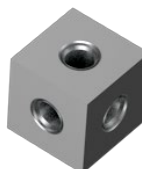
MANURHIN K'MX 413

Hliník EN AW 6061	Mosaz CuZn39Pb3	Automatová ocel 1.0737	Nerezová ocel 1.4301
23 s	25 s	28 s	42 s



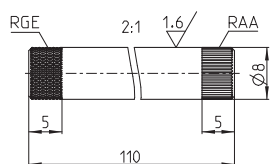
MANURHIN K'MX 413

Hliník EN AW 6061	Mosaz CuZn39Pb3	Automatová ocel 1.0737	Nerezová ocel 1.4301
31 s	32 s	35 s	50 s



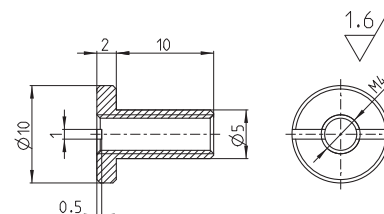
MANURHIN K'MX 413

Hliník EN AW 6061	Mosaz CuZn39Pb3	Automatová ocel 1.0737	Nerezová ocel 1.4301
38 s	40 s	46 s	60 s



MANURHIN K'MX 413

Hliník EN AW 6061	Mosaz CuZn39Pb3	Automatová ocel 1.0737	Nerezová ocel 1.4301
30 s	32 s	35 s	47 s



MANURHIN K'MX 413

Hliník EN AW 6061	Mosaz CuZn39Pb3	Automatová ocel 1.0737	Nerezová ocel 1.4301
24 s	25 s	27 s	35 s

Čas obrábění dílce je kalkulován při použití standardních nástrojů, bez speciálních technologií, vysokotlakého chlazení skrz nástroje a s ohledem na optimální životnost používaných nástrojů.