

SIX-SPINDLE AUTOMATIC LATHE

MORI-SAY TM620CNC



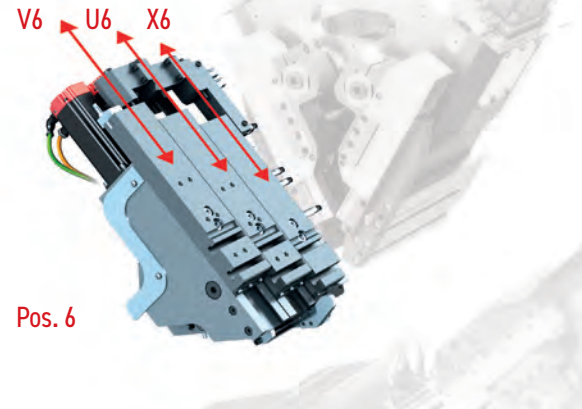
SIX-SPINDLE AUTOMATIC LATHE MORI-SAY TM620CNC

- Innovative design
- Altogether 21 CNC controlled axes (standard version)
- Max. 34 CNC controlled axes, max. 9 CNC controlled spindles
- Possibility of programming in ISO or VirtualCam
- FANUC CNC control system
- Extended technological possibilities
- High accuracy at mass and series production
- Robust base and high rigidity at machining
- Max. diameter of bar with a round cross-section 20 mm (24 mm)
- 5 compound slides in the 1st, 2nd, 3th , 4th and 5th stations as standard
- 6 independent frontal slides
- 1 cut-off slide
- Large working space allows easy access for the operator
- Two control panels with touch screens with a user-friendly interface for the operator
- Compact design with integrated electrical cabinets
- Easy handling of the machine during transport
- Special accessories applicable from the MORI-SAY 620AC machines

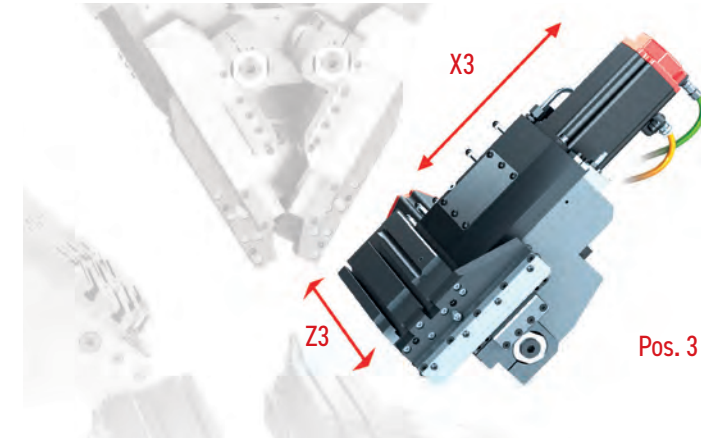
POSSIBILITIES OF THE MACHINE

- Six-spindle fully CNC-controlled automatic lathe of high accuracy, rigidity and speed. It is designed for mass and serial production of precision components from bar material up to a maximum of $\varnothing 20$ mm ($\varnothing 24$ mm).
- Machine suitable especially for products parts for automotive, hydraulic and pneumatic components.
- The Fanuc i30-B plus control system and two operator panels ensure comfortable and friendly machine operation.

- High productivity is enabled by a total of 21 CNC-controlled axes and another 13 available for special accessories and 6 spindles with a maximum speed of 6 000 rpm. Spindle drum indexing: 0,7 s.
- Wide range of accessories included automatic bar magazine expands the technological capabilities of the machine.



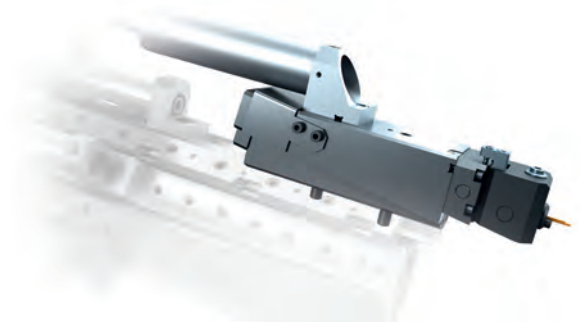
Pos. 6 – cut-off slide (X6) with two tool slides (U6 and V6 - optional accessories)



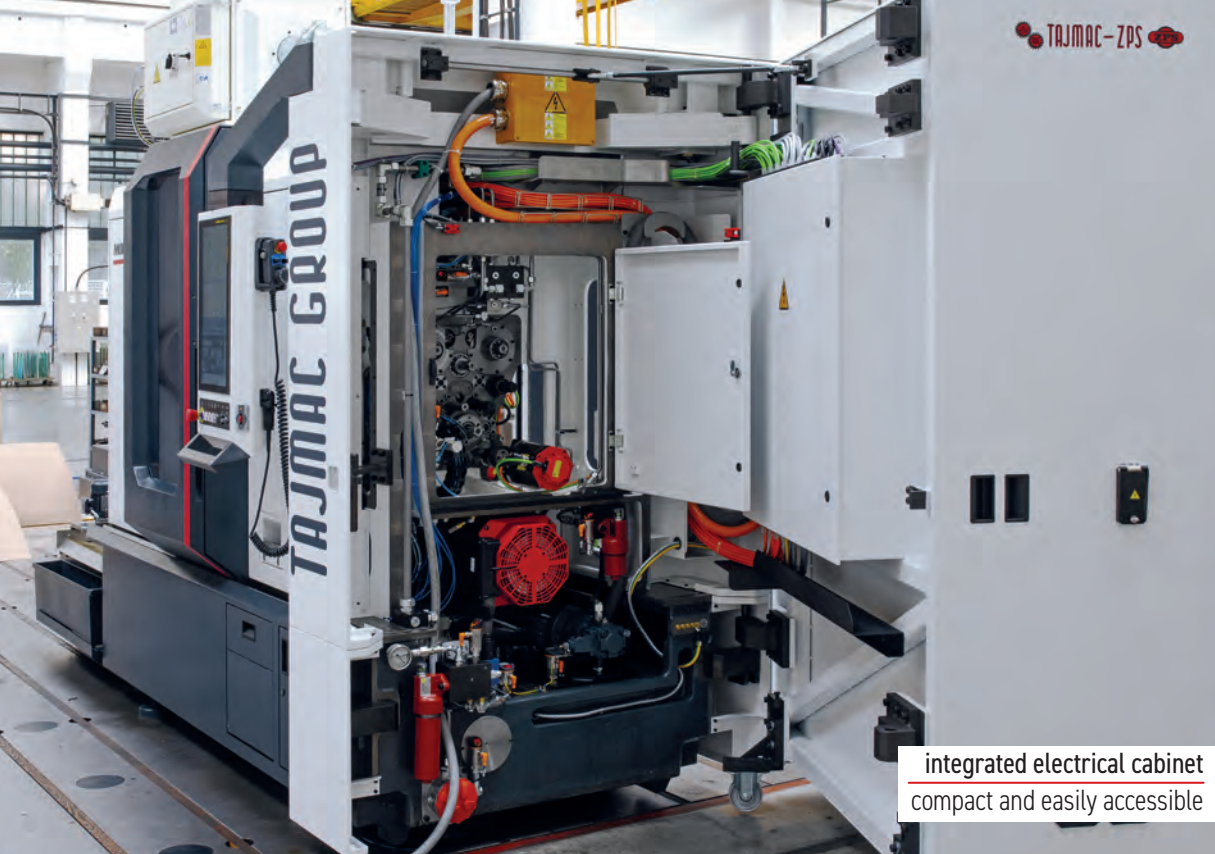
Pos. 3 – compound slide (X3, Z3) as standard



Optional accessories – NC controlled recessing attachment



Optional accessories – mechanical controlled recessing attachment (identical and usable on the machine MORI-SAY 620AC)



integrated electrical cabinet
compact and easily accessible

TAJMAC-ZPS

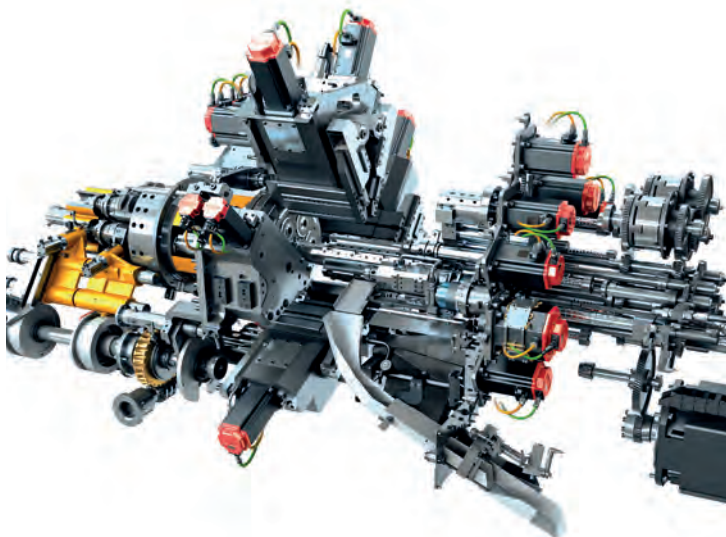


crane eye
for manipulation with the machine

working area



Control system Fanuc i30-B Plus



basic arrangement of the machine drives

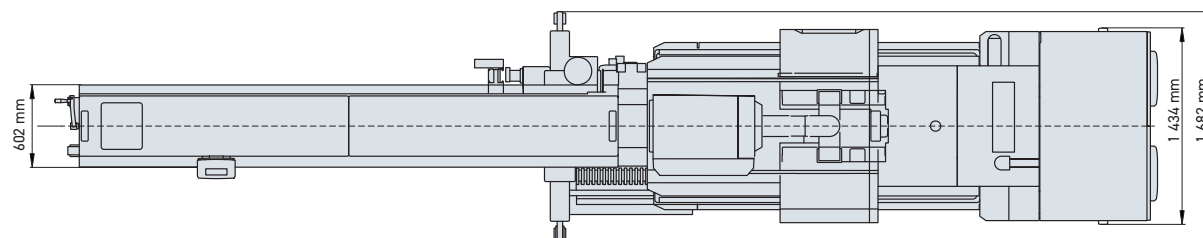
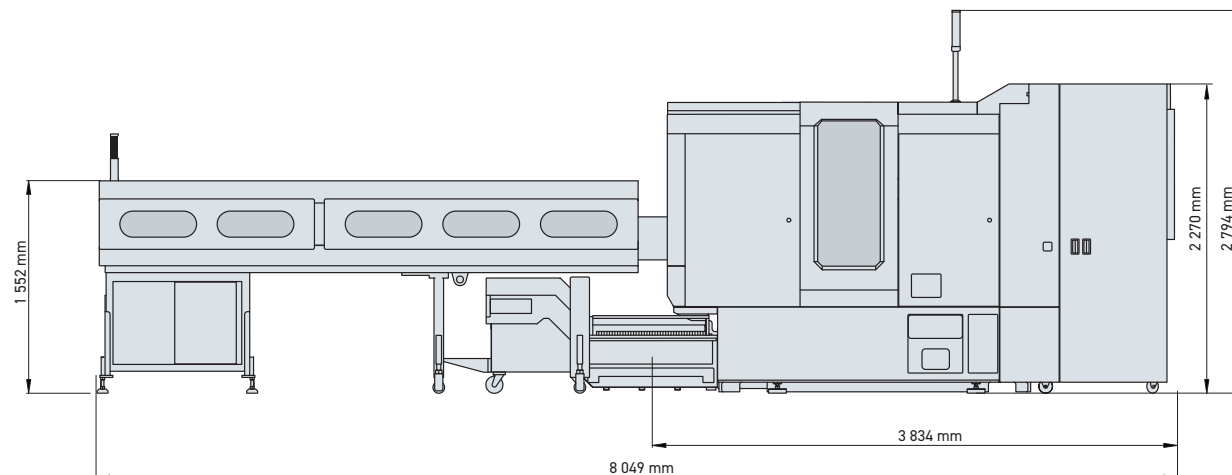
TECHNICAL PARAMETRES

MACHINE TYPE

MORI-SAY TM620CNC

Control system	Fanuc i30-B Plus
	2 pcs of 21" multi-touch display
Connection to a computer network	Yes
Max. number of controlled axes	34
Remote access (service)	Yes
Indexing time	0,7 s
Working time	3,5 - 90 s
Max. diameter of round bar (with bar loader)	20 mm (24 mm)
Max. hexagon rod diameter	17 mm
Max. material length	4 000 mm
Max. material feeding length	100 mm
X1 - X5 max. stroke	60 mm
X1 - X5 max. force	3 200 N
Z1 - Z5 max. stroke	70 mm
Z1 - Z5 max. force	3 200 N
W1 - W5 max. stroke	110 mm
W1 - W5 max. force	2 500 N
W6 max. stroke	310 mm
W6 max. force	2 000 N
X6 max. stroke	50 mm
X6 max. force	1 600 N
U6 stroke	80 mm
U6 max. force	1 600 N
V6 stroke	80 mm
V6 max. force	1 600 N
Max. main spindles speed	6 000 rpm (4 500 rpm machine with stop of spindles)
Rated spindle motor power	11 kW
XZ axes of ISO or VirtualCam programming	Position 1 - 6
W axes of ISO or VirtualCam programming	Position 1 - 6
Max. pick-up spindle speed	6 000 rpm
Rated motor power S0	2,2 kW
Machine dimensions (with 3,3 m bar loader) L x W x H	8 049 x 1 434 x 2 794 mm
Machine length (without bar loader)	3 834 mm

Dimensions of the machine with automatic bar loader
(recommended accessories)



The herein stated description and specification may not correspond with the latest model of the machine. 9/2021

CONTACT

TAJMAC-ZPS, a.s.
třída 3. května 1180
763 02 Zlín, Malenovice
Czech Republic

Phone: +420 577 532 072
Fax: +420 577 533 626
E-mail: info@tajmac-zps.cz
Web: www.tajmac-zps.cz

